

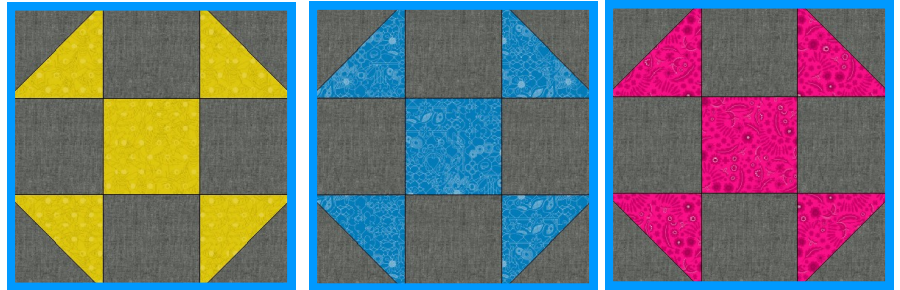
BERNINA Block Party

Block 2: Shoofly

Finished Size: 12" X 12"

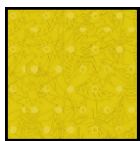
Make three.

You will need 4 fabrics for these blocks.



Fabric A	Yellow	A-8484-Y	1/4 Yard
Fabric B	Blue	A-8482-T	1/4 Yard
Fabric C	Pink	A-8483-E	1/4 Yard
Fabric D	Gray	A-C-Black	1/4 Yard

Cutting

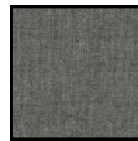
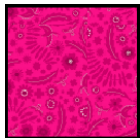
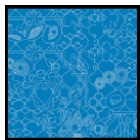


Fabric A, B, and C (from each)

1 Square 4 1/2"

2 Squares 4 7/8"

Cut in half diagonally
making 4 triangles



Fabric D (background)

12 Squares 4 1/2"

6 Squares 4 7/8"

Cut in half diagonally
making 4 triangles



Piecing

For each block:

- Piece 4 background triangles to 4 colored triangles making 4 half square triangle blocks.
- Piece 2 half square triangle blocks to a background square (see step 2). Create two of these rows.
- Piece 2 background squares to a colored square (see step 3).
- Piece rows together to create the Shoofly block (see step 4).
- Repeat for the other 2 colors.



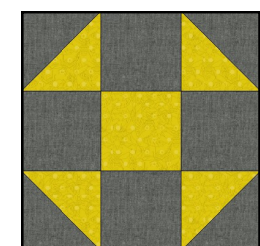
Step 1



Step 2



Step 3



Step 4